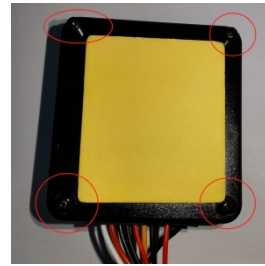


Keyless alertor remote key matching

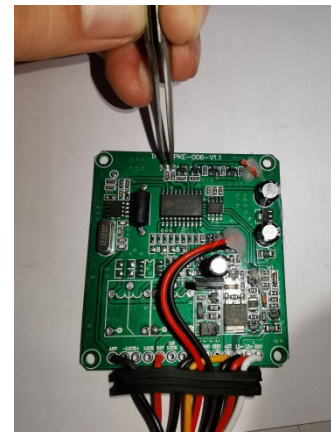
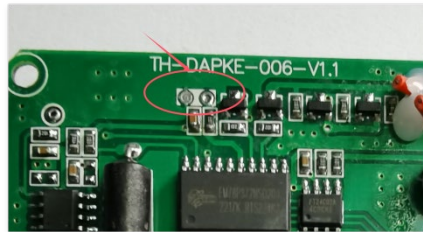
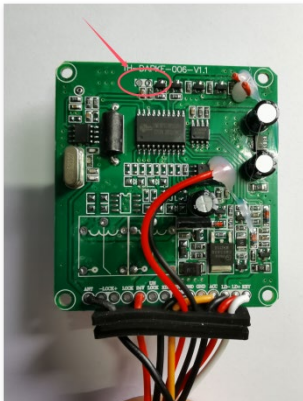
1. You must have one key in hand to unlock the burglar alertor, if you lose both keys, you have to replace keyless alertor assembly
2. Disconnect the battery, disassemble the alertor, see below image, loosen 4 screws of alertor host.



3. Open the cover of alertor host, place the board in a completely isolated position (don't touch any metal parts), see below image for the electric board.



4. Press the remote key to turn on the scooter, and use wires or metal tweezers, make two contacts short circuit like below image, after making sure all good contact, press the lock button of new remote control and unlock button of old remote control



5. Test both remote control if they work well, if one of them fails, you should operate the matching again like above process
6. If all work well, re-assemble the keyless alertor to the scooter