

Description: S-Drive Default Program <Mod>

File Name: L46-1300W-200A - prg <Mod> Program

Program Presets: No Yes

Group: General

Vehicle Serial Number: _____

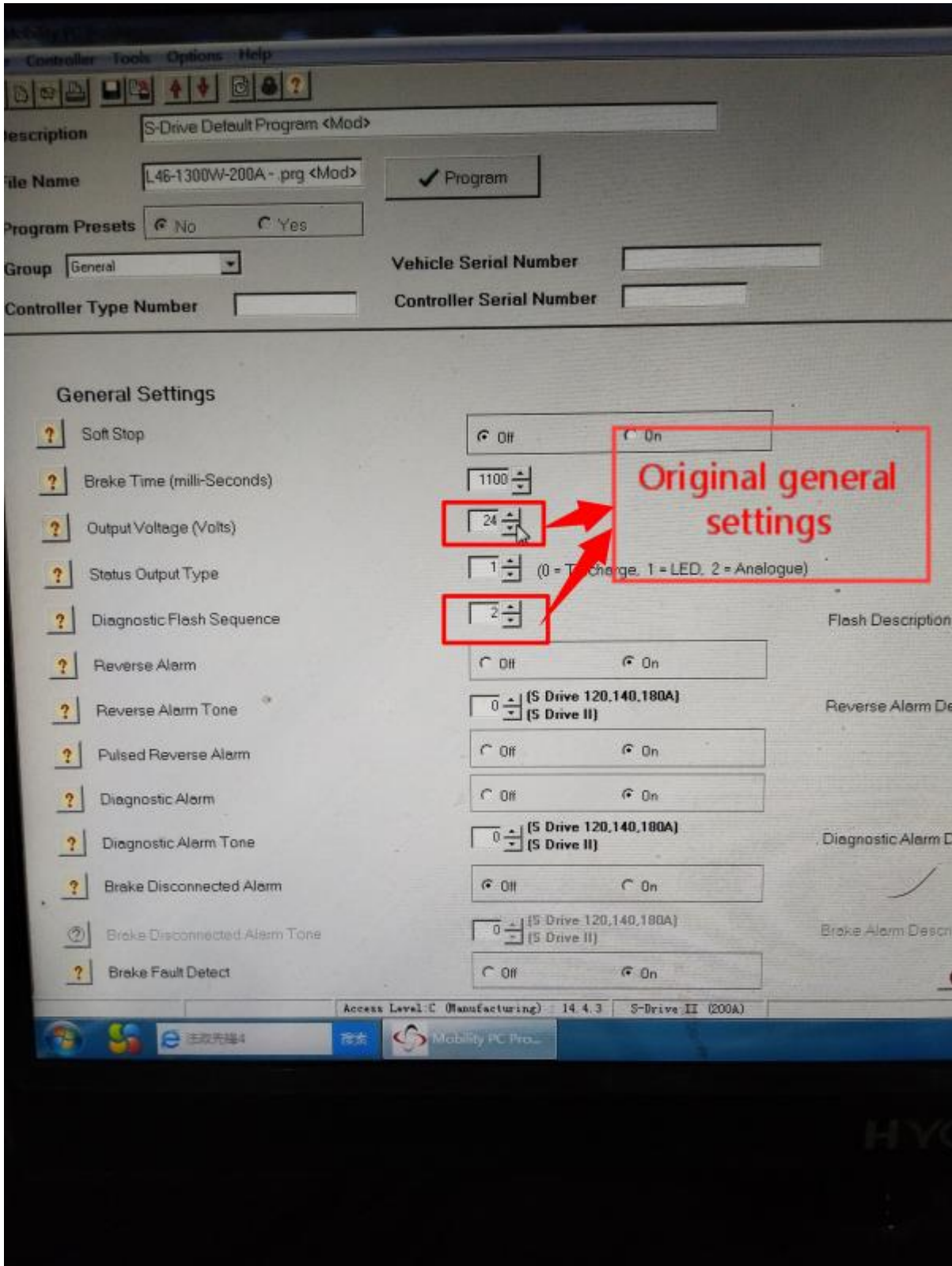
Controller Type Number: _____

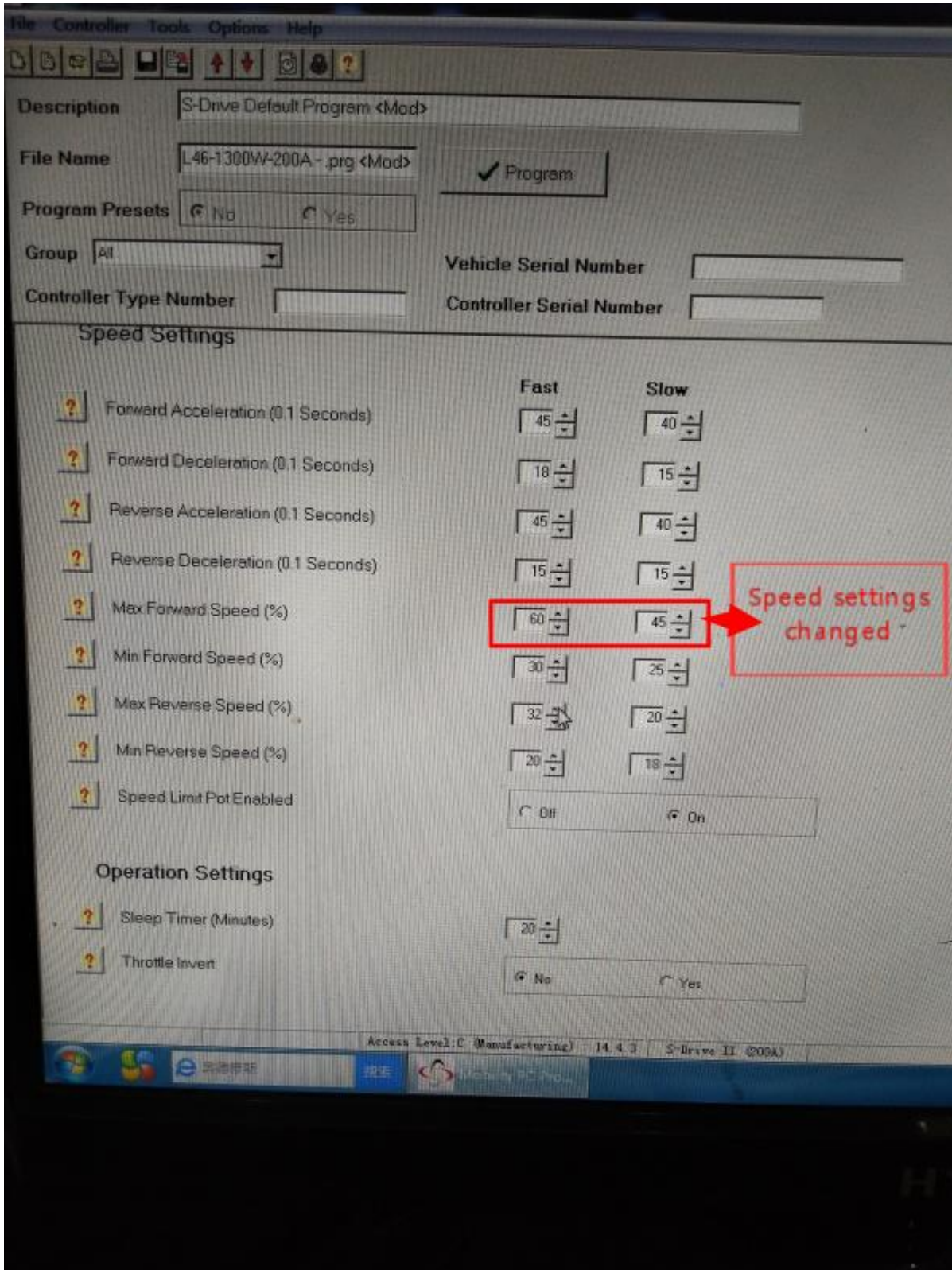
Controller Serial Number: _____

General Settings

- Soft Stop Off On
- Brake Time (milli-Seconds)
- Output Voltage (Volts) **General settings changed**
- Status Output Type (0 = Incharge, 1 = LED, 2 = Analogue)
- Diagnostic Flash Sequence
- Reverse Alarm Off On
- Reverse Alarm Tone (S Drive 120,140,180A) (S Drive II)
- Pulsed Reverse Alarm Off On
- Diagnostic Alarm Off On
- Diagnostic Alarm Tone (S Drive 120,140,180A) (S Drive II)
- Brake Disconnected Alarm Off On
- Brake Disconnected Alarm Tone (S Drive 120,140,180A) (S Drive II)
- Brake Fault Detect Off On









Description: S-Drive Default Program <Mod>

File Name: L46-1300W-200A-.prg Program

Program Presets: No Yes

Group: [Dropdown]

Vehicle Serial Number: [Input]

Controller Type Number: [Input]

Controller Serial Number: [Input]

Speed Settings

	Fast	Slow	
<input type="checkbox"/> Forward Acceleration (0.1 Seconds)	45	40	<input checked="" type="checkbox"/> Warning
<input type="checkbox"/> Forward Deceleration (0.1 Seconds)	18	15	
<input type="checkbox"/> Reverse Acceleration (0.1 Seconds)	45	40	
<input type="checkbox"/> Reverse Deceleration (0.1 Seconds)	15	15	
<input type="checkbox"/> Max Forward Speed (%)	100	60	<input checked="" type="checkbox"/> Warning
<input type="checkbox"/> Min Forward Speed (%)	30	25	<input checked="" type="checkbox"/> Warning
<input type="checkbox"/> Max Reverse Speed (%)	25	20	
<input type="checkbox"/> Min Reverse Speed (%)	20	18	
<input type="checkbox"/> Speed Limit Pot Enabled	<input type="checkbox"/> Off <input checked="" type="checkbox"/> On		<input checked="" type="checkbox"/> Warning

Original speed settings

Operation Settings

<input type="checkbox"/> Sleep Timer (Minutes)	20
<input type="checkbox"/> Throttle Invert	<input checked="" type="radio"/> No <input type="radio"/> Yes

HYC

