

Royale & Royale Plus King Single Adjustable Beds



Royale (Adjustable)



Royale Plus (High / Low Adjustable)

USER MANUAL

Thank you for purchasing your Zoom Mobility Adjustable Bed. We are honoured you have chosen a Zoom Adjustable Bed for your needs.

Intended Use:

Experience an unparalleled night's sleep on the best adjustable bed. The head and feet up positioning may relieve aches, and the 3-massage settings could help relax your muscles and help you unwind after a long day. The Royale is designed for the person who enjoys watching TV, reading, or even eating in bed. The base is equipped with Wireless Remote, Anti-Snore pre-set, under bed LED lighting and so much more. The Royale Plus base is equipped with Wireless Remote, Height Adjustable, you can preset your favourite position and much more.

Please read the instructions carefully before using this product.

1. Preface

- I. Open the package and take out the product and all components.
- II. Check each part carefully before use. If anything becomes broken, do not use.
- III. Keep these instructions in a safe place for future reference.

DISCLAIMER



We ask that you read this manual completely before operating your new Zoom Mobility Adjustable Bed. Zoom Mobility is not and cannot be held responsible for any damage or injury incurred due to improper or unsafe use of the Zoom Mobility Adjustable Bed. The safe use of your new bed is important to us.

Zoom Mobility specifically disclaims responsibility for any bodily injury or property damage that may occur during any use that does not comply with applicable federal, state, or local laws or ordinances.

FOR YOUR RECORDS

Please fill in your Zoom Royale / Royale Plus King Single Adjustable Bed information below. This information will be useful in the event that you ever need to contact Zoom Mobility concerning your Royale Adjustable Bed.

Model _____ Serial Number (*if applicable*) _____

Date of Purchase _____ Invoice Number _____

Provider Name _____

Company _____

Address _____

City _____ State _____ Postcode _____

Contents

Introduction	1
ROYALE ADJUSTABLE BED	2
Features	2
Specifications – Royale Adjustable Bed	4
Unique Features	5
Legs & Remote	6
ROYALE PLUS HIGH / LOW ADJUSTABLE BED	8
Assembly	8
Specifications – Royale Plus High / Low Adjustable Bed	10
Remote Control Battery Installation	11
Pairing Remote	12
Massage Function	13
Troubleshooting	19
Parts List	20
WARRANTY	21

Introduction

Congratulations on the purchase of your new Zoom Mobility Adjustable Bed. We are excited to provide you with one of our innovative Adjustable Beds that combines cutting edge technology with attractive designs that is also highly functional in today's world. We at Zoom Mobility know that you have chosen an Adjustable Bed that will enhance the quality of your life.

If you feel that you do not understand the instructions and suggestions presented in this user manual, or if, for any reason, you do not feel capable of performing the activities necessary to assemble, disassemble, operate, or maintain your Zoom Mobility Adjustable Bed, please contact your local Zoom Mobility provider, or call Zoom Mobility for further instructions.

Zoom Mobility cannot be held responsible for personal injury or property damage resulting from the unsafe or the improper use of any of our products. Also, Zoom Mobility cannot be held responsible for personal injury or property damage resulting from attempts to follow instructions, suggestions, and guidelines presented in this user manual.

Our Research and Development Department, our Quality Control Department, and our Engineering Department have used the latest product specifications and the latest product design information to manufacture your Zoom Mobility Adjustable Bed. Zoom Mobility reserves the right to implement changes into our product lines when those changes become desirable or necessary. If changes are implemented into our product line, there may be minor differences between the product you purchased and the illustrations and instructions in this user manual.

There are several situations, including some medical conditions, where the Adjustable Bed user will need to practice operating the Adjustable Bed in the presence of a trained attendant. A trained attendant can be defined as a family member or care professional specially trained in assisting with an Adjustable Bed.

As you begin using your Adjustable Bed during daily activities you will probably encounter situations in which you will need some practice. Simply take your time and you will soon be in full and confident control of your adjustable bed. This manual covers the use of various models, you will note that many of the operations and adjustments are similar and as such images may depict a different model to that which you have purchased.

For more information about our products and services or to send us your comments, email sales@zoommobility.com.au

ROYALE ADJUSTABLE BED

Features

Wall-Hugger Technology

The innovative wall hugger adjustable base glides towards the wall when inclined to keep you within arm's reach of your nightstand.



Anti-Snore Position

This preset position raises the head section of the base slightly to help reduce snoring.



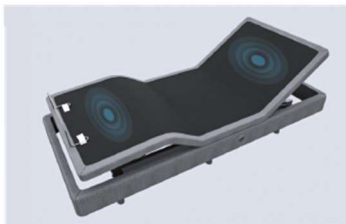
Zero Gravity Position

When you raise your feet above your heart (known as the zero-gravity position), you can help increase blood circulation and reduce your stress and soreness in the body.



Full-Body Massage

Dual massage with variable intensity settings helps you unwind in the comfort of your own home, while the dual USB port provides the ultimate in convenience for USB devices.



Full-body Massage

Smartphone Control

Can be controlled wirelessly, by the backlit hand controller or by smartphone app on iOS & Android phones.



Smartphone Control



Under-Bed LED Lighting

Soft glow of bed light will turn on to guide you safely across the room in the dark, no disturbing glare to wake others.



Under-Bed LED Lighting

Specifications – Royale Adjustable Bed

MODEL DETAILS	Royale
Product Name	Adjustable Bed Bases
Item	Royale
Size	King Single
Colour	Frame – Black / Fabric – Grey
Material	High Density Steel
Fabric	Microfibre
Certificates	CE; RoHS; OEKO-TEX; BSCI; ISO9001
Dimensions – L x W	203cm x 105cm
Maximum Incline	60 degrees for head 40 degrees for foot
Maximum Capacity	0~60 degrees
Warranty:	12 months on motor system
Weight Capacity	300kg
Weight of Unit – without mattress	65 kg

** Specifications are correct at time of print and are subject to change without notification



Unique Features



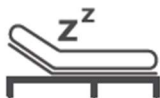
USB
Connectivity



Underbed
lighting



Wireless
Remote



Anti-Snoring
Position



One-touch Pre-set
Flat Position



Child Lock

Legs & Remote



Leg 1



Leg 2



Leg 3



Leg 4

**WARNING!****WATCH FINGER PLACEMENT! BE CAREFUL NOT TO PINCH YOUR FINGERS!**

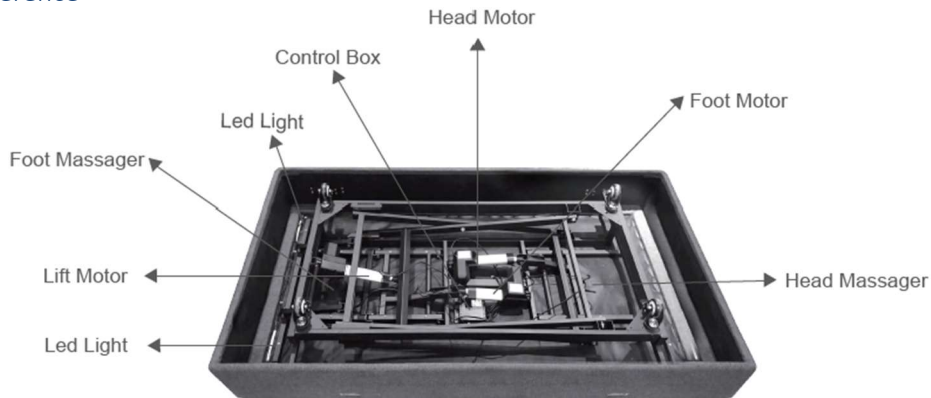
Royale Plus



ROYALE PLUS HIGH / LOW ADJUSTABLE BED

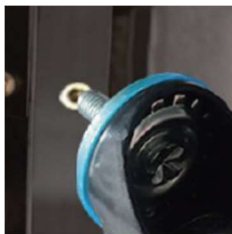
Assembly

Bed Quick Reference



Intelligent design, no assembly, all you need is to install the foot of bed, please follow the steps below:

1. Hand tighten all four castors into the bed frame until secure. Take care not to over tighten.



2. Install the power cord by connecting the cord jack to the receptacle on the control box (see image below). Be sure the cord is connected completely and securely.



3. With two people lift the bed by the metal frame and turn it over, so the at the mattress side is facing up. **Do not lift the bed with the fabric skirt, as this may cause damage.** Move the bed to the desired location.
4. To install the mattress first locate the black hole/s at the end and sides of the bed base, then insert the mattress retainer bar/s into the black holes (see images above).

Specifications – Royale Plus High / Low Adjustable Bed

MODEL DETAILS	Royale
Product Name	Adjustable Bed Bases
Item	Royale
Size	King Single
Colour	Frame – Black / Fabric – Dark Grey
Material	High Density Steel
Fabric	Polyester
Certificates	CE; RoHS; OEKO-TEX; BSCI; ISO9001
Dimensions – L x W x H	203cm x 105cm x (38cm to 70cm)
Maximum Incline	60 degrees for head 40 degrees for foot
Maximum Capacity	0~60 degrees
Warranty:	12 months on motor system
Weight Capacity	180kg
Weight of Unit – without mattress	110 kg

** Specifications are correct at time of print and are subject to change without notification



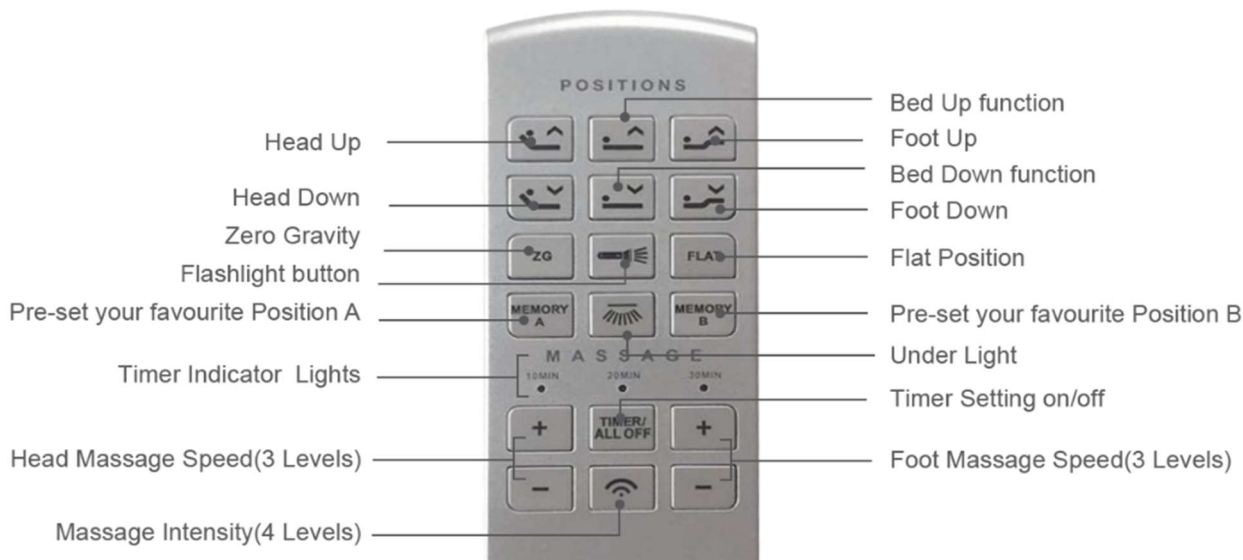
Remote Control

Overview

All the functions of the bed can be operated with the remote control. The remote control comes with pre-programmed buttons that will automatically adjust when pressed, or you can manually control adjustments using the arrow buttons on the remote control. See the diagram below for a complete list of the remote-control functions.

Remote Control Battery Installation

Remove the battery cover on the back side of the remote control. Insert the AAA batteries (included).



Pairing Remote

The original remote that comes in the box is already paired to the bed base. No further action is required. In the event that the remote is not paired with the bed base, follow the steps below:

1. Connect the whole system, the LED light on the control box is blue;
2. Double click "PAIR" button on the control box, the LED light the control box changes to continuous blue;
3. Simultaneously press both "Head Up" and "Foot Up" buttons of the remote for seconds until the remote light starts flashing; and
4. When the Blue LED light turns off and the green power LED light turns on, the pairing setting is now updated.




Massage Function

Massage Intensity Button

Click the button, the vibrating intensity will raise up/lower down by one level increments (total of 4 levels).

Massage Speed Button

If the vibrating has started, click the button  or , the vibrating speed will raise up/lower down one level, until it stops, total 3 levels.

If vibration has stopped, press  button and the vibration will start up in the speed of level one and in the intensity of current level.

Massage Timer

Press the "Timer" button to select a 10, 20, 30-minute massage. The blue light will flash once indicating which timer setting is activated. Massage will automatically turn off after the time selected.

The procedure to set these special positions is below:



Press this button, the bed moves to Zero Gravity position, it is a pre-set ergonomic position before packaging.



Press this button, the bed moves to a flat position.



Adjust the bed to your desired position, press and hold on



and



buttons of the remote for 5

seconds until the remote light starts flashing, release it and press



, the position is then saved.



Adjust the bed to your desired position, press and hold on



and



buttons of the remote for 5

seconds until the remote light starts flashing, release it and press



, the position is then saved.

Battery Backup

Important:

The backup battery is only to be used in case of a power outage. Batteries are not to be used for normal operation of the bed.

Backup Battery Use:

Use two (2) x 9-volt alkaline batteries only (not included). If a power outage occurs install the 9-volt batteries into the provided battery pack on the power cord (see image on Page 14). The backup battery will not support repeated movement for long periods of time. While using the backup battery it is recommended to move the head and foot of the bed independently rather than simultaneously. Do not use the "Flat" button to lower the bed. Do not use the massage motors when using the battery backup. If the remote control is missing the bed can be returned to the flat position by pressing and holding the emergency lower button located on the control box under the bed. **Remove the battery pack/batteries after power is restored as the system will continue to draw power from the battery, even if not in use.**

Synchronizing Two Bases

If simultaneous operation of two beds is desired, please read the instructions. If you don't need Synchronising just remove the Synchronizing cable.

1. Plug A and B bases into a power source.



2. Plug the synchronizing cable into 2 control boxes of 2 bases.



3. Then Base A and Base B can be simultaneously operated by one remote.



NOTICE IF POSSIBLE, PLEASE REFER TO THIS MANUAL BEFORE CONTACTING YOUR AUTHORIZED ZOOM MOBILITY PROVIDER/LOCAL MOBILITY ADJUSTABLE BED TECHNICIAN.

Troubleshooting

In the event that the power foundation fails to operate, assess the symptoms and possible solutions provided in the chart below.

Problem	Solution
Remote control illuminates and appears to be operable but will not activate the bed.	Verify that the power cord is plugged into a working, grounded electrical outlet. Test the outlet by plugging in another working appliance.
No features of the power bed base will activate.	<ul style="list-style-type: none"> (a) Program the remote control (see Pairing Remote section of this manual for programming procedures). (b) Unplug the power cord, wait 30 seconds, and plug back to reset electronic components. (c) The electrical outlet or surge protection device may be defective. Test the outlet by plugging in another working appliance. (d) Check the connectors are securely attached to the control box.
Wireless remote will not illuminate.	Replace the batteries in the wireless remote.
Head & Foot lift function has minor interference during operation.	Check batteries in wireless remote control, replace with three (3) new AAA batteries if necessary.

Parts List

All electronics and components that need to be installed are located in boxes under the foundation or attached to the frame.

Before discarding the packing materials, ensure that all the parts are accounted for.



A. 3 Inch Castors X4



B. Power Supply X 1



C. Power cord X 1



D. Retainer Bar
(to be attached to bedframe)



E. AAA Batteries X 3



F. Remote Control X 1

WARRANTY

Consumer Limited Warranty

Adjustable Beds

Zoom Mobility has provided information throughout the user manual regarding proper usage and care of your Adjustable Bed. Failure to adhere to this information will void the warranty of the Adjustable Bed and its parts supplied by Zoom Mobility.

The following warranty is granted only to the INITIAL Consumer who has purchased our product and commences on the Date of Purchase by the Consumer from an Authorized Zoom Mobility' Provider. The Consumer must have proof of purchase from Zoom Mobility or the authorised Adjustable Bed provider to receive service.

The warranty covers the following Adjustable Bed models unless otherwise noted:

Royale and Royale King Single Adjustable Bed.

1 Year Limited Warranty:

For the life of the Adjustable Bed, from the date of purchase from an authorized Zoom Mobility' dealer, in the event of defective materials or workmanship, Zoom Mobility will repair or replace at our option any of the following structural frame components found to be defective by an authorized Zoom Mobility representative:

- ◆ Steel Frame

Items not listed are covered at the discretion of Zoom Mobility. Any accessories, standard or optional, supplied by Zoom Mobility, are covered for a period of one year from the date of purchase with the particular unit.

Warranty Exclusions:

This warranty also excludes for the following:

- ◆ Loss or theft of components
- ◆ Damage caused by:
 - Spillage or leakage.
 - Abuse, misuse, accident, or negligence.
 - Improper operation, maintenance, or storage.
 - Commercial use or use other than normal.
 - Exceeding the specified weight capacity of the unit.
 - Repairs and/or modifications made to any part without the specific consent of Zoom Mobility.
 - Accessories other than those supplied or approved by Zoom Mobility.
 - Failure to adhere to the product instructions.
 - Acts of Nature, such as lightning strikes, cyclones, earthquakes, etc
 - Circumstances beyond the control of Zoom Mobility.
- ◆ ANY PARTS ALTERED OR REPAIRED BY AN UNAUTHORIZED PERSON.

As mentioned above, the guarantee does not extend to those items which may need replacement due to normal wear and tear, or damage to the product caused by misuse or accident for which Zoom Mobility or its agent cannot be held responsible. This warranty does not include service calls. Transport/Call Out Costs - As the owner you must bear the cost of transporting the unit to the dealer or should you decide to have the dealer come to you, you must bear the cost of the dealers call out fee. Your dealer may choose to waive this cost, but this will be at the Dealers discretion only and separate to Zoom Mobility's warranty terms and conditions.

Warranty:

Zoom Mobility reserves the right to replace warranted part(s) with refurbished or new part(s) at our discretion. All labour charges, service calls, transportation costs or any other charge(s) associated with the installation of any warranted part(s) are the responsibility of the consumer. Warranty is for the replacement of the parts only and does not include freight for the replacement parts. Consumers are not to return any item(s) to Zoom Mobility without prior written authorization. Any damages incurred while warranted part(s) are in transport are the sole responsibility of the consumer.

There is no other express warranty.

Implied warranties including those of merchantability and fitness for a particular purpose are excluded. Liabilities for consequential damages are excluded. This warranty gives you specific rights and you may also have other rights which may vary from state to state.



Technical Service, please scan the following QR code.



Copyright Zoom Mobility
User Manual & Warranty Booklet 2023